



Product Data Sheet

SOLAR LINK® 1000 #9675

No. 69675 - 10/13



Sierra Wave® Solar Link® 1000 delivers over 1000 watt-hours of portable power with a true 1000 watt pure sine wave inverter and a relatively lightweight LiFePo4 battery, compared to AGM batteries. This power storage and distribution center also features a state-of-the-art battery management technology making it the most, reliable, powerful and lightweight power system on the market. Operate a variety of appliances from the 120V, 12V or USB power outputs.

SPECIFICATIONS

- Battery type LiFePo4 (lithium iron phosphate) 80Ah - 12.8V (1024 Watt-Hours)
- Battery lifespan..... 1500+ cycles (cycle = charge and discharge) up to 90% performance
- Inverter..... Pure Sine Wave
- Protection Circuit..... Built-in over voltage and self-discharge protection
- DC input power Anderson Power Poles - 12-14.8V /10A Max
- Anderson Connectors Solar, Wind Turbine 12-24V 10A Max - 150W
- 120V AC Wall Charger..... Input: 120V AC, 100-230V, 50/60 Hz, 100VA
Output: 14.8V, 10A
UL, FCC, DC approved
- Rated output power 2 - 12V DC - 15A, total 1024 watt-hours
3 - USB 2.0 (5V-2A), 10W per port, 1024 watt-hours
2 - AC 120V, 60hz, 1000 continuous- 2000 watt surge power, pure sine wave inverter, average 90% efficiency for a total of 920 watt-hours
- Operating temperature 32° - 113°F (0° - 45°C)
- Weight 51 lbs. (23Kg)
- Dimensions 15" x 14" x 9" (381 x 355 x 228mm)

Packaging:

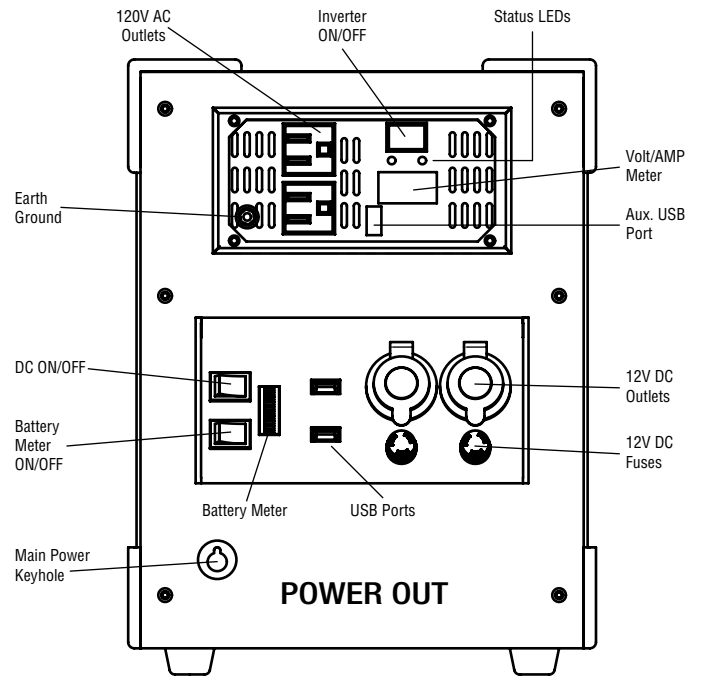
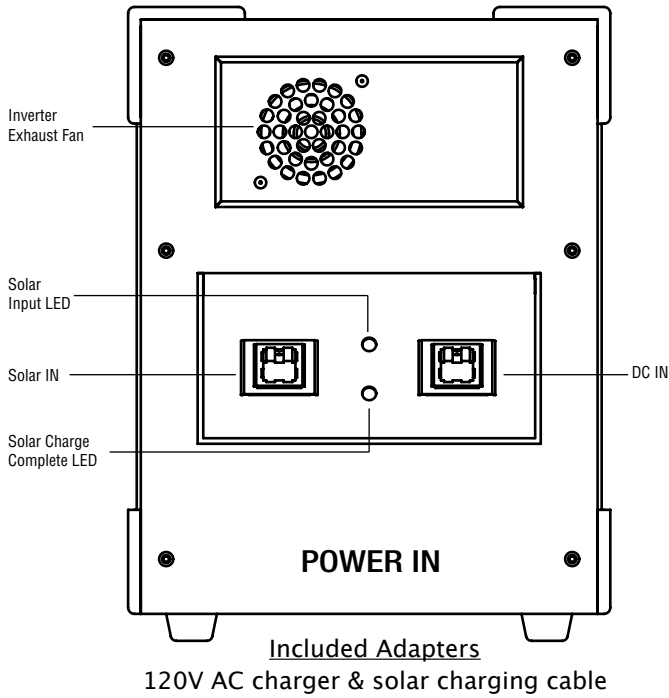
Case (1):	56 lbs. (25.4kg)	3.1 CF (0.009 CM)	22.5" x 15.5" x 15.5" (348 x 393 x 393mm)
-----------	------------------	-------------------	---



Aervoe Industries, Inc.
P.O. Box 485, Gardnerville, NV 89410

(775) 783-3100 Phone • (775) 782-5687 Fax • (800) 227-0196 Customer Service
www.aervoe.com • mailbox@aervoe.com

PARTS IDENTIFICATION



OPERATING INFORMATION

The Sierra Wave Solar Link 1000 can be charged using an available 120V electrical outlet or operate self-sufficiently using the Sierra Wave 120W Solar Collector. This power storage and distribution center has a remarkable battery management system. Provides energy piece of mind for the home, farm, cabin, or work site. See the accessories listed below.

Charge Time

6–8 hours using the included 120V AC charger

10–12 hours using the Sierra Wave #9590 120-Watt Solar Collector

Operating Time Samples

9 hours 100 watt AC refrigerator

18 hours 500 watt DC freezer

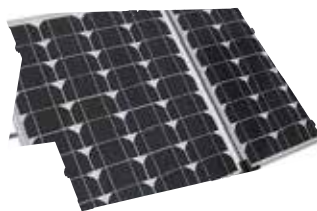
¾ hours 1000 watt microwave

Note for 120V AC operation: includes a pure sine wave inverter with a 1000W maximum output and 920 watt-hours of available power

To estimate how many hours of power are in the Solar Link using 120V, find the watt hour draw of the appliance that you wish to power and divide into 920. (EX: One 10-watt light = 92 hours of continuous light)

Pure Sine Wave Inverter Information: Do not use any AC device above 920 watts. An in-line protection fuse and overload protection circuit is included for added safety. Pure sine wave power is suitable for most AC devices and power supplies used in electronic equipment, transformers, and motors. Aervoe assumes no liability for use with medical equipment or life support systems.

Available Solar Collector



9590 Sierra Wave®
120-Watt Solar Collector

WARRANTY

1-year performance warranty on all products from date of purchase. Report to home office or local Aervoe representative for examination. Because Seller cannot control Buyer's handling or use of product, Seller makes no warranty expressed or implied when not used or stored in accordance with directions. Seller shall not be liable for cost of labor, incidental or consequential damages, and this warranty is limited to repair or replacement of product at company option.